

**When Work Disappears:  
Manufacturing Decline and  
the Falling Marriage Market  
Value of Young Men**

*David Autor, David Dorn, Gordon Hanson*

## **Impressum:**

CESifo Working Papers

ISSN 2364-1428 (electronic version)

Publisher and distributor: Munich Society for the Promotion of Economic Research - CESifo GmbH

The international platform of Ludwigs-Maximilians University's Center for Economic Studies and the ifo Institute

Poschingerstr. 5, 81679 Munich, Germany

Telephone +49 (0)89 2180-2740, Telefax +49 (0)89 2180-17845, email [office@cesifo.de](mailto:office@cesifo.de)

Editors: Clemens Fuest, Oliver Falck, Jasmin Gröschl

[www.cesifo-group.org/wp](http://www.cesifo-group.org/wp)

An electronic version of the paper may be downloaded

- from the SSRN website: [www.SSRN.com](http://www.SSRN.com)
- from the RePEc website: [www.RePEc.org](http://www.RePEc.org)
- from the CESifo website: [www.CESifo-group.org/wp](http://www.CESifo-group.org/wp)

# When Work Disappears: Manufacturing Decline and the Falling Marriage Market Value of Young Men

## Abstract

We exploit the gender-specific components of large-scale labor demand shocks stemming from rising international manufacturing competition to test how shifts in the relative economic stature of young men versus young women affected marriage, fertility and children's living circumstances during 1990-2014. On average, trade shocks differentially reduce employment and earnings of young adult males. Consistent with Becker's model of household specialization, shocks to male's relative earnings reduce marriage and fertility. Consistent with prominent sociological accounts, these shocks heighten male idleness and premature mortality, and raise the share of mothers who are unwed and the share of children living in below-poverty, single-headed households.

JEL-Codes: F160, J120, J130, J210, J230.

Keywords: marriage market, fertility, mortality, household structure, single-parent families, trade flows, import competition, local labor markets.

*David Autor*  
MIT Department of Economics  
Cambridge / MA / USA  
[dautor@mit.edu](mailto:dautor@mit.edu)

*David Dorn*  
University of Zurich  
Zurich / Switzerland  
[david.dorn@econ.uzh.ch](mailto:david.dorn@econ.uzh.ch)

*Gordon Hanson*  
UC San Diego  
San Diego / CA / USA  
[gohanson@ucsd.edu](mailto:gohanson@ucsd.edu)

April 2018

This paper previously circulated under the title "The Labor Market and the Marriage Market" (first circulating draft May 12, 2014). Autor, Dorn and Hanson acknowledge funding from the Russell Sage Foundation (RSF Project #85-12-07). Dorn acknowledges funding from the Spanish Ministry of Science and Innovation (grants CSD2006-00016 and ECO2010-16726) and the Swiss National Science Foundation (grant BSSGI0-155804). Autor and Hanson acknowledge funding from the National Science Foundation (grant SES-1227334). We thank Andrew Cherlin, Janet Currie, Marianne Page, Ann Huff Stevens, Kathleen Vohs, Jane Waldfogel, two anonymous referees, and numerous seminar and conference participants for valuable suggestions. We are grateful to Juliette Fournier, Ante Malenica, Timothy Simmons, Oscar Suen, Juliette Thibaud, and Melanie Wasserman for expert research assistance.

“The consequences of high neighborhood joblessness are more devastating than those of high neighborhood poverty... Many of today’s problems in the inner-city ghettos—crime, family dissolution, welfare, low levels of social organization, and so on—are fundamentally a consequence of the disappearance of work.” William Julius Wilson, *When Work Disappears*, 1996, pp. xiii.

“Wilson’s book spoke to me. I wanted to write him a letter and tell him that he had described my home perfectly. That it resonated so personally is odd, however, because he wasn’t writing about the hillbilly transplants from Appalachia—he was writing about black people in the inner cities.” J.D. Vance, *Hillbilly Elegy: A Memoir of Family and Culture in Crisis*, 2016, p. 144.

## 1 Introduction

An influential body of work associated with sociologist William Julius Wilson (1986; 1987; 1996) hypothesizes that the decline of U.S. blue-collar employment has diminished the pool of economically secure young adult men, thereby reducing women’s gains from marriage, eroding traditional parental roles, and imperiling children.<sup>1</sup> Wilson’s narrative is close relative of the classic Becker (1973) framework in which the economic gains to marriage arise in part from spousal earnings differences, which spur household specialization.<sup>2</sup> Reflecting the difficulty of distinguishing cause from effect in the correlations between labor-market opportunity and family structure, the literature has, with important exceptions, faced a challenge in testing these hypotheses.<sup>3</sup> We surmount this challenge by assessing how adverse labor-market shocks for young adults, emanating from rising trade pressure on U.S. manufacturing, affect marriage, fertility, and children’s living circumstances. Following Autor et al. (2013b) and Acemoglu et al. (2016), we exploit cross-industry and cross-local-labor-market variation in import competition stemming from China’s market reforms to trade to identify labor-demand shocks that are concentrated on manufacturing.

In linking local-labor-demand shocks to marriage and fertility, our work is close in spirit to Black et al. (2003) who document an increasing prevalence of single-headed households in four U.S. states that suffered a decline in their coal and steel industries, and Kearney and Wilson (2017) who observe rising fertility but no change in marital patterns in U.S. regions that benefited from the 2000s fracking boom. Our study complements the evidence from these episodes of industry-specific booms

---

<sup>1</sup>See also Jahoda et al. (1971), Murray (2012), Bailey and DiPrete (2016), and Greenwood et al. (2017).

<sup>2</sup>Whereas Becker focuses on *relative* economic stature, Wilson’s argument further implies that holding gender differentials constant, an *absolute* fall in male economic stature reduces the value of marriage.

<sup>3</sup>Exceptions include Angrist (2002) and Charles and Luoh (2010).

and busts by assessing whether two decades of contracting U.S. manufacturing employment across a large set of industries and localities has affected marital and family outcomes. Distinct from much prior work, we exploit gender dissimilarities in industry specialization to identify demand shocks that distinctly affect men’s and women’s employment and earnings. Our strategy thus complements work by [Shenhav \(2016\)](#), who uses gender-specific Bartik shocks and gender differences in occupational choice to predict changes in relative gender earnings in U.S. states.<sup>4</sup> We provide three main results.

First, shocks to manufacturing labor demand, measured at the commuting-zone (CZ) level, exert large negative impacts on men’s relative employment and annual wage-and-salary earnings. Although earnings losses are visible throughout the earnings distribution, the relative declines in male earnings are largest at the bottom of the distribution.<sup>5</sup>

Second, these shocks curtail the availability and desirability of potentially marriageable young men along multiple dimensions: reducing the share of men among young adults in a CZ and increasing the prevalence of idleness—the state of being neither employed nor in school—among young men who remain. Underscoring the acuity of economic distress, we find, related to [Case and Deaton \(2015; 2017\)](#) and [Pierce and Schott \(2016b\)](#), that these forces induce a differential and economically large rise in male mortality from drug and alcohol poisoning.

Finally, we link manufacturing decline to marriage, fertility, and children’s household circumstances. Much literature shows that adverse labor-market shocks reduce the fraction of young women who are currently married. The [Becker \(1973\)](#) model makes a stronger prediction: a fall in the *relative* economic stature of men diminishes the gains from household specialization and therefore reduces the prevalence of marriage, while a decline in women’s economic opportunities has the opposite effect. We confirm the Becker prediction using the gender-specific components of manufacturing decline, and further show that these shocks raise the fraction of mothers who are unwed, the fraction of children in single-headed households, and the fraction of children living in poverty.

These results complements work by [Schaller \(2016\)](#) showing that improvements in men’s labor market conditions predict increases in fertility while improvements in women’s labor market conditions do the opposite.<sup>6</sup> They also support Wilson’s observation that manufacturing contractions

---

<sup>4</sup>The [Shenhav \(2016\)](#) analysis focuses on the economic independence of women rather than the declining marriage-market value of men; it draws its empirical strategy in part on an earlier version of this paper ([Autor et al., 2014a](#)).

<sup>5</sup>[Autor, Dorn and Hanson \(2013a\)](#) find that trade shocks reduce CZ-level mean earnings and [Chetverikov, Larsen and Palmer \(2016\)](#) demonstrate that these shocks raise CZ-level earnings inequality.

<sup>6</sup>Work by [Ananat et al. \(2013\)](#) shows that adverse local economic shocks reduce teen birthrates and sexual activity, while raising contraceptive use and abortion, while [Page et al. \(2007\)](#) and [Lindo et al. \(2013\)](#) document adverse impacts

shrink the pool of economically secure young adult men and erode traditional household arrangements. Because trade-induced manufacturing shocks generate both an *absolute* fall in the employment and earnings of young adult men and a fall in these outcomes *relative* to women, our empirical setting does not allow us to cleanly distinguish between the Becker hypothesis—focusing on *relative* economic stature—and Wilson’s thesis, focusing on men’s *absolute* economic stature.

Alongside providing support for the argument that contracting blue-collar employment catalyzes changes in gender roles and household structures, our analysis indicates that Wilson’s conclusions apply to a far broader group of adults than the urban poor African Americans on whom he focused, and that the magnitude of these effects are sizable relative to observed declines in male employment rates, female fertility, and prevalence of marriage among U.S. young adults.<sup>7</sup>

## 2 Empirical Approach

We examine changes in exposure to international trade for U.S. CZs associated with the growth in U.S. imports from China. Rising trade with China is responsible for nearly all of the expansion in U.S. imports from low-income countries since the early 1990s (Pierce and Schott, 2016a). Our empirical strategy builds on Autor et al. (2013a) and Acemoglu et al. (2016). We approximate local labor markets using the construct of CZs developed by Tolbert and Sizer (1996), and include the 722 CZs that cover the U.S. mainland.

Our measure of the local-labor-market shock is the average change in Chinese import penetration in a CZ’s industries, weighted by each industry’s share in initial CZ employment:

$$\Delta IP_{i\tau}^{cu} = \sum_j \frac{L_{ij90}}{L_{i90}} \Delta IP_{j\tau}^{cu}. \quad (1)$$

Here,  $\Delta IP_{j\tau}^{cu} = \Delta M_{j\tau}^{cu} / (Y_{j91} + M_{j91} - X_{j91})$  is the growth of Chinese import penetration in the U.S. for industry  $j$  over period  $\tau$ , which in our data include the time intervals 1990 to 2000 and 2000 to 2014. It is computed as the growth in U.S. imports from China,  $\Delta M_{j\tau}^{cu}$ , divided by initial absorption (U.S. industry shipments plus net imports,  $Y_{j91} + M_{j91} - X_{j91}$ ) in the base year 1991, near the start of China’s export boom. The fraction  $L_{ij90}/L_{i90}$  is the share of industry  $j$  in CZ  $i$ ’s total employment, as measured in County Business Patterns data in 1990. Differences in  $\Delta IP_{i\tau}^{cu}$

---

of parental job loss on children’s living circumstances.

<sup>7</sup>Vance (2016) argues that Wilson’s observations now apply more broadly to the white working class. We confirm that our key findings hold when we focus on non-Hispanic whites.

across CZs stem from variation in local industry employment structure in 1990, which arises from differential concentration of employment in manufacturing versus non-manufacturing activities and specialization in import-intensive industries within local manufacturing. In all specifications, we control for the start-of-period manufacturing share within CZs so as to focus on variation in exposure to trade stemming from differences in industry mix within local manufacturing.

The measure  $\Delta IP_{i\tau}^{cu}$  captures overall trade exposure experienced by CZs but does not distinguish between employment shocks that differentially affect male and female workers. To add this dimension of variation, we modify (1) to exploit the fact that manufacturing industries differ in their male and female employment intensity—so that trade shocks of a given magnitude will differentially affect male or female employment depending on the set of industries that are exposed. We incorporate this variation by multiplying the CZ-by-industry employment measure in (1) by the initial period female or male share of employment in each industry by CZ ( $f_{ij90}$  and  $1 - f_{ij90}$ ), thus apportioning the total CZ-level measure into two additive subcomponents,  $\Delta IP_{i\tau}^{m,cu}$  and  $\Delta IP_{i\tau}^{f,cu}$ :

$$\Delta IP_{i\tau}^{m,cu} = \sum_j \frac{(1 - f_{ij90}) L_{ij90}}{L_{i90}} \Delta IP_{j\tau}^{cu} \quad \text{and} \quad \Delta IP_{i\tau}^{f,cu} = \sum_j \frac{f_{ij90} L_{ij90}}{L_{i90}} \Delta IP_{j\tau}^{cu}. \quad (2)$$

As shown in Appendix Table A1, Chinese import penetration rose by 0.95 percentage points between 1990 - 2000, with an additional 1.15 percent rise per decade over 2000 - 2014. Sixty percent of this rise accrued to male employment.<sup>8</sup>

We identify the supply-driven component of Chinese imports by instrumenting for growth in Chinese imports to the U.S. using the contemporaneous composition and growth of Chinese imports in eight other developed countries.<sup>9</sup> Our instrument for the measured import-exposure variable  $\Delta IP_{i\tau}^{cu}$  is a non-U.S. exposure variable  $\Delta IP_{i\tau}^{co}$  that is constructed using data on industry-level growth of Chinese exports to other high-income markets:

$$\Delta IP_{i\tau}^{co} = \sum_j \frac{L_{ij80}}{L_{i80}} \Delta IP_{j\tau}^{co}. \quad (3)$$

This expression differs from (1) by using realized imports from China by other high-income markets

---

<sup>8</sup>We construct (1) using trade data from UN Comtrade that we harmonize to 4-digit SIC industries, and data on CZ employment by industry from the County Business Patterns. In (2), we further use Census IPUMS data to compute gender shares within industries and CZs, and assign to each SIC industry in a CZ the gender share of the Census industry in the CZ encompassing it. Most outcome variables are based on Census IPUMS samples for 1990 and 2000 (Ruggles et al., 2004) and pooled American Community Survey samples for 2013 through 2015. We allocate PUMAs to CZs using the algorithm in Dorn (2009) and Autor and Dorn (2013).

<sup>9</sup>The eight comparison countries—determined by the availability of comparable trade data for the full sample period—are Australia, Denmark, Finland, Germany, Japan, New Zealand, Spain, and Switzerland.

( $\Delta M_{j\tau}^{co}$ ) in place of China-U.S. import penetration ( $\Delta M_{j\tau}^{cu}$ ); and by replacing other variables with lagged values to mitigate simultaneity bias.<sup>10</sup> The exclusion restriction underlying our instrumentation strategy is that the common component of import growth in the U.S. and in other high income countries derives from factors specific to China, associated with its rapidly evolving productivity and trade costs. [Autor et al. \(2013a\)](#) provide tests against correlated demand shocks and develop an alternative estimation strategy based on the gravity model of trade.

### 3 Main results

#### 3.1 Employment and earnings

We assess the causal effect of trade shocks on employment by fitting models of the form

$$\Delta Y_{sit} = \alpha_t + \beta_1 \Delta IP_{i\tau}^{cu} + \mathbf{X}'_{it} \beta_2 + e_{sit}, \quad (4)$$

where  $\Delta Y_{sit}$  is the decadal change in the manufacturing employment share of the young adult population ages 18 - 39 in CZ  $i$  among gender group  $s$  (males, females, or both) during time interval  $\tau$ . Our focus is on employment of young adults because this population is disproportionately engaged in marriage and child-rearing.<sup>11</sup> We estimate (4) by stacking ten-year equivalent first differences for 1990 to 2000 and 2000 to 2014, while including dummies for each decade ( $\alpha_t$ ). The explanatory variable of interest is the change in CZ-level import exposure  $\Delta IP_{i\tau}^{cu}$ , instrumented by  $\Delta IP_{i\tau}^{co}$  as in (3).<sup>12</sup> The control vector  $\mathbf{X}'_{it}$  contains start-of-period CZ-level covariates, including: time trends for U.S. Census Divisions; the lagged share of CZ employment in manufacturing, absorbing general shocks to the sector; controls for employment in occupations susceptible to automation and offshoring (see [Autor and Dorn, 2013](#) and [Goos et al., 2014](#)); and CZ demographics (race, education, and the fraction of working-age adult women who are employed).

<sup>10</sup>The start-of-period employment shares  $L_{ij80}/L_{i80}$  and the gender shares  $f_{ij80}$  are replaced by their 10 year lags, while initial absorption in the expression for industry-level import penetration is replaced by its 3 year lag.

<sup>11</sup>Our sample is individuals who are not residents of institutionalized group quarters such as prisons. Here, we pool individuals of all races and ethnicities; we show in Appendix Table A5 that our results also hold separately for non-Hispanics whites, for whom we have sufficient statistical power to conduct a separate CZ-level analysis.

<sup>12</sup>When performing gender-specific estimates, we replace  $\Delta IP_{i\tau}^{cu}$  with  $\Delta IP_{i\tau}^{m,cu}$  and  $\Delta IP_{i\tau}^{f,cu}$ , and use the corresponding gender-specific instruments. In Appendix Table A2, we report OLS and 2SLS estimates separately by time period, with corresponding first stages for 2SLS models. A falsification test in this table shows that the negative effect of the China trade shock on employment is not present in the 1980s (i.e., prior to its occurrence) and has the opposite sign in the 1970s, when labor-intensive U.S. manufacturing was still expanding in some U.S. regions.

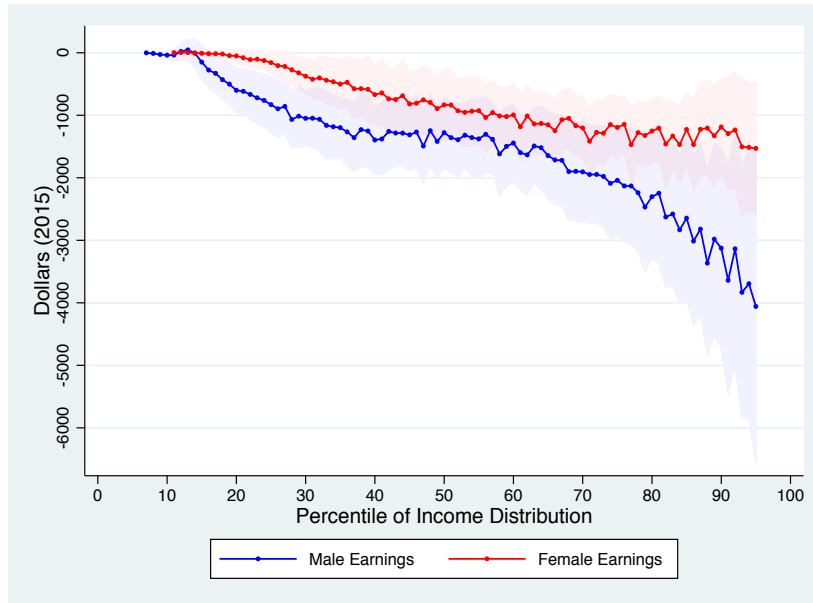


Table 1: Estimated Impact of Manufacturing Trade Shock on Manufacturing Employment by Gender and Gender Differential in Employment Status, Earnings, and Idleness, 1990-2014: 2SLS Estimates. Dependent Variables: Changes in Percentage of Population Age 18-39 that is Employed in Manufacturing, Changes in Gender Differentials in Employment Status (in % pts); Change in Gender Differential in Annual Earnings (in \$); Change in Gender Differential in Percentage of Young Adults Age 18-25 that is Employed, Not Employed but in School, or Neither Employed nor in School

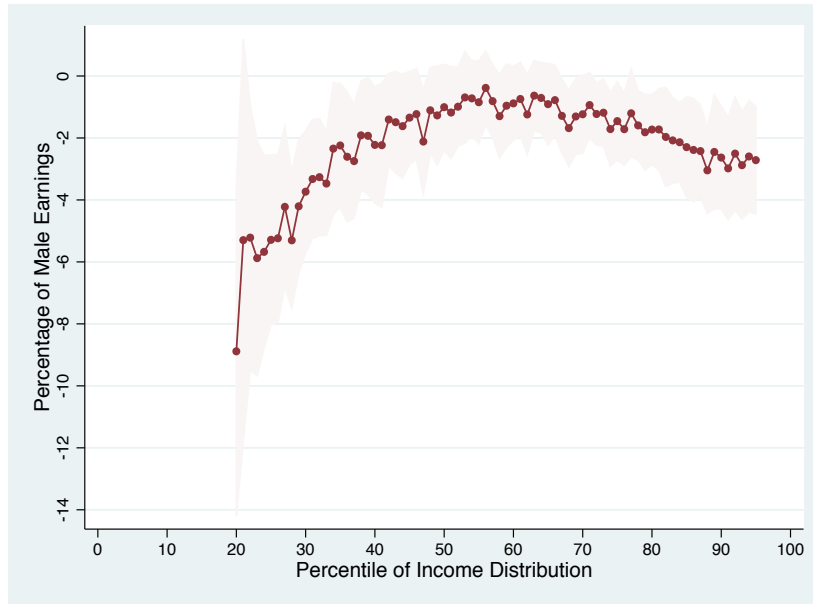
	<i>A. Manufacturing Employment as a Share of Population, Age 18-39</i>			<i>B. Male-Female Differential by Employment Status Age, 18-39</i>		
	M+F	Males	Females	Emp	Unemp	NILF
	(1)	(2)	(3)	(1)	(2)	(3)
<i>I. Overall Trade Shock</i>						
$\Delta$ Import Penetration	-1.06 **	-0.99 **	-1.09 **	-0.65 *	0.19 *	0.46 ~
	(0.17)	(0.17)	(0.20)	(0.26)	(0.09)	(0.24)
<i>II. Male Industry vs Female Industry Shock</i>						
$\Delta$ Import Penetration $\times$ (Male Ind Emp Share)	-1.21 **	-2.59 **	0.20	-3.13 **	0.38	2.75 **
	(0.44)	(0.51)	(0.43)	(0.78)	(0.26)	(0.62)
$\Delta$ Import Penetration $\times$ (Female Ind Emp Share)	-0.88 *	0.82 ~	-2.56 **	2.17 **	-0.02	-2.15 **
	(0.35)	(0.46)	(0.38)	(0.65)	(0.26)	(0.64)
Mean Outcome Variable Level in 1990	-2.61 12.98	-3.19 17.37	-2.06 8.68	-2.74 14.64	0.03 1.22	2.71 -15.87
	<i>C. Male-Female Differential in Annual Earnings (\$), Age 18-39</i>			<i>D. M-F Diff in Idleness, Age 18-25</i>		
	P25	Median	P75	Emp	No Emp In School	No Emp No School
	(1)	(2)	(3)	(1)	(2)	(3)
<i>I. Overall Trade Shock</i>						
$\Delta$ Import Penetration	-672 **	-445 *	-847 *	-0.64 ~	-0.02	0.66 **
	(193)	(191)	(334)	(0.34)	(0.26)	(0.20)
<i>II. Male Industry vs Female Industry Shock</i>						
$\Delta$ Import Penetration $\times$ (Male Ind Emp Share)	-2,216 **	-2,945 **	-3,685 **	-3.16 **	0.56	2.60 **
	(516)	(593)	(1081)	(1.03)	(0.73)	(0.60)
$\Delta$ Import Penetration $\times$ (Female Ind Emp Share)	1,086 *	2,400 **	2,384 **	2.24 *	-0.68	-1.55 **
	(529)	(630)	(814)	(0.92)	(0.74)	(0.56)
Mean Outcome Variable Level in 1990	-1,894 6,926	-2,126 13,376	-2,491 17,489	-2.83 7.70	-0.25 0.87	3.08 -8.56

Notes: N=1444 (722 CZ x 2 time periods). Panel C analyzes the change over time in the difference between a percentile of the unconditional male earnings distribution in a commuting zone and the corresponding percentile in the unconditional female earnings distribution. All models include a dummy for the 2000-2014 period, occupational composition controls (start-of-period indices of employment in routine occupations and of employment in offshorable occupations as defined in Autor and Dorn, 2013), start-of-period shares of commuting zone population that is Hispanic, black, Asian, other race, foreign born, and college educated, as well as the fraction of women who are employed. Models are weighted by the product of period length and commuting zone share of start-of-period U.S. mainland population. Robust standard errors in parentheses are clustered on state. ~  $p \leq 0.10$ , \*  $p \leq 0.05$ , \*\*  $p \leq 0.01$ .

Figure 1: Impact of Manufacturing Trade Shock on Earnings of Males and Females Age 18-39, 1990-2014



A. Impact on Male and Female Annual Earnings by Percentile, 1990-2014



B. Impact on Male-Female Annual Earnings Gap 1990-2014 as a Percentage of 1990 Male Earnings

The top panel measures the impact of a unit trade shock on the unconditional distribution of annual earnings (in \$2015) separately for males and females. Each dot indicates a coefficient estimate from a separate IV quantile regression with group-level treatment (Chetverikov, Larsen and Palmer 2016) that controls for the covariates indicated in Table 1, and shaded areas indicate a 95% confidence interval. The bottom panel reports the effect of a unit trade shock on the difference in the male-female annual earnings gap expressed as a percentage of male earnings in 1990 at the indicated percentile.

The first panel of Table 1 estimates the impact of rising trade exposure on the locus of proximate impact: manufacturing employment. In 1990, 17.4 percent of young men and 8.7 percent of young women ages 18-39 were employed in manufacturing (bottom row of panel A).<sup>13</sup> Estimates in columns A1 through A3 find that rising import competition reduces manufacturing employment among both sexes. A one unit trade shock—roughly equal to the average decade-level CZ-level rise in trade exposure over the 1990-2014 period—depresses the share of young adults employed in manufacturing by 1.06 percentage points ( $t = -6.3$ ) with similar effects on young men ( $\hat{\beta} = -0.99$ ,  $t = -5.8$ ) and young women ( $\hat{\beta} = -1.09$ ,  $t = -5.5$ ). These estimates imply large declines in manufacturing employment among young adults over our 24-year window: a drop of 2.5 percentage points (20 percent) among men and of 2.7 percentage points (31 percent) among women.

We introduce the gender-specific trade shocks in panel A-II. Despite the high correlation between these by-gender measures ( $\rho = 0.80$ ), there is abundant power for distinguishing their independent effects. Column A1-II finds that a unit rise in import penetration of either male or female-dominated industries reduces manufacturing employment by 1 percentage point. Columns A2-II and A3-II demonstrate that the employment effects of sex-specific shocks fall mostly on their corresponding genders. A unit trade shock to male-specific industries reduces male manufacturing employment by 2.6 points ( $t = -5.1$ ) and has a small and statistically insignificant impact on female employment; a unit trade shock to female-specific industries reduces female manufacturing employment by 2.6 points ( $t = -6.7$ ), while having a modest positive effect on male employment. Our ability to cleanly differentiate male- and female-specific shocks is crucial to the analysis that follows.

We consider the broader impacts on overall employment in panel B of Table 1. Here and below, we report the causal effects of trade shocks on the male-female *gap* in outcomes rather than on their levels so as to measure impacts on relative economic stature.<sup>14</sup> Although trade shocks have similar impacts on male and female manufacturing employment, the estimate in column B1-I shows that these shocks significantly depress the male relative to female employment-to-population rate—a unit trade shock reduces male relative employment by 0.65 points ( $t = -2.5$ ).<sup>15</sup> While one might have predicted this differential effect based upon men’s overrepresentation in manufacturing, the results in panel A—showing that trade shocks reduce male and female manufacturing employment in

<sup>13</sup>The denominator for this calculation is the non-institutionalized adult population ages 18-39. Among *employed* adults in this demographic group, these fractions were 21.1 and 12.9 percent respectively.

<sup>14</sup>Appendix Table A3 provides by-gender estimates for each gender gap outcome of Table 1.

<sup>15</sup>For brevity, we use the term ‘relative’ to mean the difference in levels rather than the ratio of levels.

lockstep—underscore that differential manufacturing exposure is *not* the explanation. Rather, these estimates indicate that trade shocks differentially reduce male employment in non-manufacturing. Panel A of Appendix Table A3 indicates that the overall employment loss of males due to a unit trade shock is larger than the decline in manufacturing employment seen in panel A of Table 1 (−1.5 vs −1.0 percentage points) while the overall employment decline for women is slightly smaller than in manufacturing (−0.9 vs −1.1 percentage points).<sup>16</sup>

We next quantify the impact of gender-specific trade shocks on the distribution of annual wage and salary income. For this analysis, we implement the Chetverikov et al. (2016) technique for performing instrumental-variable estimates of the distributional effects of group-level treatments. Panel C of Table 1 shows estimates of the effect of trade shocks on the CZ-level male-female earnings gap for the 25<sup>th</sup>, 50<sup>th</sup>, and 75<sup>th</sup> percentiles of the distribution. Within CZs, male earnings substantially exceed female earnings at all quantiles, with the size of the gap rising steeply with the quantile index. In 1990, this gap was \$6,926, \$13,376, and \$17,489 at the 25<sup>th</sup>, 50<sup>th</sup>, and 75<sup>th</sup> quantiles, respectively (bottom rows of panel C). Between 1990 and 2014, these gaps compressed by \$1,894, \$2,126 and \$2,491 *per decade* at the 25<sup>th</sup>, 50<sup>th</sup>, and 75<sup>th</sup> quantiles respectively. Reinforcing the panel B findings for the gender gap in employment, the first row of estimates in panel C demonstrates that trade shocks differentially curtail male earnings. A one-unit trade shock reduces male relative to female earnings by \$672 at the 25<sup>th</sup> percentile (column C1,  $t = -3.5$ ), by \$445 at the median (column C2,  $t = -2.3$ ), and by \$847 at the 75<sup>th</sup> percentile (column C3,  $t = -2.5$ ).<sup>17</sup>

Since the male-female earnings gap is smaller at lower wage quantiles, the relative impact of trade shocks on the male-female wage gap is largest among low-earners, as seen in Figure 1. The first panel details that trade-induced earnings losses are larger for males than females at every quantile from the 15<sup>th</sup> to 95<sup>th</sup> percentile.<sup>18</sup> The second panel reports the impact of a unit trade shock on the male-female annual earnings *gap* expressed as a percentage of baseline male earnings in 1990 at the corresponding percentile. Trade shocks modestly compress the male-female annual earnings gap in the upper half of the annual earnings distribution. The effect is more dramatic below: the

---

<sup>16</sup> Acemoglu et al. (2016) find substantial employment losses in industries that sell their outputs to import-competing manufacturing, including mining whose workforce is strongly male-dominated.

<sup>17</sup> Panel C-II of Table 1 shows that shocks centered on male employment have a larger effect on the gender earnings gap than do shocks centered on female employment.

<sup>18</sup> Annual earnings for both genders are zero below the 10<sup>th</sup> percentile. Above the 95<sup>th</sup> percentile, earnings are largely censored and then imputed by the Census Bureau.

male-female wage compression is 2 points at the median, 4 points at  $p35$ , and 6 points at  $p20$ .<sup>19</sup>

The gender-specific estimates in Appendix Table A3 confirm that trade shocks reduce employment and earnings of both genders; that employment and absolute earnings losses are larger for males than for females; and that proportional earnings losses for both sexes are larger at low than high percentiles. These findings support Wilson’s observation that manufacturing contractions shrink the pool of economically secure young adult men, generating both an *absolute* fall in the employment and earnings of young adult men and a fall in these outcomes *relative* to women.

### 3.2 Gender gaps in idleness, absence, and mortality

The heart of the Wilson hypothesis is that adverse shocks to blue-collar employment catalyze a broader deterioration in adult social function. We test for such consequences with three non-market measures: idleness, absence, and mortality. Idleness is the state of being neither employed nor in school; we focus on the ages 18-25, which cover the transition between school and work.<sup>20</sup> In panel D of Table 1, we estimate a variant of (4) where the dependent variable is the male-female gap in three main (mutually exclusive) activity statuses: currently employed (D1), not employed but enrolled in school (D2), and neither employed nor enrolled in school (D3), which we refer to as idleness. Column D1 shows that a unit trade shock lowers the fraction of young men employed by 0.64 percentage points relative to women of the same age range ( $t = -2.5$ ). This is nearly identical to the effect found for the broader set of adults ages 18-39 considered in column B1. Column D3 finds that the entire differential rise in non-participation among young males is due to increased idleness (0.66 points,  $t = -2.5$ ), with little effect on school enrollment (column D2). This pattern is reinforced when focusing on the gender-specific components of trade exposure (panel D-II): shocks to male-intensive manufacturing generate a larger differential increase in male idleness (2.6 points,  $t = 4.3$ ) than do shocks to female-intensive manufacturing ( $-1.6$  points,  $t = -2.8$ ).<sup>21</sup> Panel C of Appendix Table A3 reports these impacts separately by gender. The differential effect of manufacturing shocks on the male-female idleness gap stem entirely from increases in male idleness. By contrast, reductions in

---

<sup>19</sup>These reductions are relative to the baseline male earnings *level* not the baseline gap, indicating large changes. We truncate the estimates at  $p20$  because the low values of the denominator below this point make estimates uninformative.

<sup>20</sup>Aguiar, Bils, Charles and Hurst (2017) document that young men devote more time to video games and recreational computer use, while working fewer hours.

<sup>21</sup>In panel D, unemployed adults are categorized as either students or as idle. If we define idleness as the state of being neither employed, unemployed, nor in school, we continue to find a significant differential impact of trade shocks on male idleness. The corresponding point estimates and standard errors for column D3 under this definition are: 0.34 (0.15), 2.13 (0.41), and  $-1.69$  (0.43) for rows 1, 2, and 3 respectively.

female employment accrue almost entirely to increases in female school enrollment.

Table 2: Estimated Impact of Manufacturing Trade Shock on Male Share of Adult Residents and Gender Differentials in Death Rates 1990-2015: 2SLS Estimates. Dependent Variables: Change in Percentage of Male Share of Residents; Cumulative Male-Female Difference in Death Rates per 100k Population by Cause of Death

	<i>A. Percentage of Male Residents</i>			<i>B. Male-Female Death Rate Differential Ages 20-39</i>						
	18-39	18-25	Total	D&A Poison	Liver Disease	Diabetes	Lung Cancer	Suicide	All Other	
	(1)	(2)	(3)	(4)	(5)	(6)	(7)	(8)	(9)	
<i>I. Overall Trade Shock</i>										
$\Delta$ Import Penetration	-0.25 *	-0.28 ~	69.6 *	21.9 **	-0.3	-1.5	0.7	-5.5	41.2 ~	
	(0.11)	(0.16)	(27.5)	(7.0)	(1.2)	(1.1)	(0.6)	(4.7)	(23.0)	
<i>II. Male vs Female Industry Shock</i>										
$\Delta$ Import Penetration $\times$ (Male Ind Emp Share)	-0.62 *	-0.76 ~	183.4 *	72.9 **	-2.6	1.9	-1.1	-21.1 ~	94.4	
	(0.27)	(0.43)	(78.1)	(20.2)	(2.9)	(3.4)	(1.4)	(11.9)	(71.6)	
$\Delta$ Import Penetration $\times$ (Female Ind Emp Share)	0.18	0.26	-56.1	-36.1 ~	2.4	-5.3	2.8 ~	12.0	-17.4	
	(0.15)	(0.29)	(70.3)	(19.2)	(3.2)	(3.8)	(1.7)	(10.5)	(65.3)	
<i>III. Summary Stats: Cumulative Mortality 1990-2015 (Decadal Averages)</i>										
Male-Female Gap			1,199.5	133.6	15.0	7.5	1.9	222.2	819.3	
Males			2,133.6	221.7	31.5	26.1	11.7	288.8	1,553.7	
Females			934.1	88.1	16.5	18.6	9.8	66.6	734.5	

Notes: N=1444 (722 CZ  $\times$  2 time periods). The percentage of male residents is measured for the period 1990-2014 among all individuals who do not reside in institutionalized group quarters. Male share of CZ residents in 1990 was 49.6% among 18-39 and 50.2% among ages 18-25. Weighted mean changes in these variables were 0.11 and 0.19 respectively. Cumulative decadal mortality rates cover the period 1990-2015. All regressions include the full set of control variables from Table 1, and regressions in Panel B control for a ten-year lag of the outcome variable. Regressions are weighted by the product of period length and CZ population share, and standard errors are clustered on state. ~  $p \leq 0.10$ , \*  $p \leq 0.05$ , \*\*  $p \leq 0.01$ .

Table 2 presents complementary evidence on absence and mortality. The first two columns test whether trade shocks reduce the supply of non-institutionalized young men in a local labor market. Columns 1 and 2 confirm that they do. A one unit trade shock reduces the fraction of males among adults ages 18-39 and 18-25 by about 0.25 points, with the effect on the broader age group more precisely estimated ( $t = -2.2$ ) than the effect on the narrower age group ( $t = -1.8$ ). The lower row of estimates (panel A-II) demonstrates that these (modest) shifts in the relative availability of young men stem from shocks to male-intensive employment: a unit shock to male-intensive manufacturing reduces the male fraction of young adults by two-thirds to three-quarters of a percentage point. A unit shock to female-intensive manufacturing generates a countervailing effect, but it is only one-third as large and is statistically insignificant.

The reduced supply of young adult males in trade-impacted CZs may reflect gender differences in migration, incarceration, homelessness, or mortality.<sup>22</sup> We focus on mortality, which is

<sup>22</sup>Autor et al. (2013b) and Autor et al. (2014b) do not find robust evidence for increased outmigration from import-competing CZ, but do not test for gender-specific migration patterns. Deiana (2015), Feler and Senses (2015), and

well-measured, has an unambiguous interpretation, and has attracted attention following Case and Deaton (2015; 2017). Using U.S. Vital Statistics files enumerating person-level death certificates for all U.S. residents, Table 2 reports the impact of trade shocks on the gender gap in cumulative mortality per decade—overall and by cause—per 100K adults ages 20-39.<sup>23</sup> Our analysis is related to Pierce and Schott (2016b), who link county-level trade exposure to rising mortality due to accidental poisoning and suicide in the working-age population. Guided by our focus on the interaction between labor markets and marriage markets, our analysis focuses on mortality among young adults ages 20-39 and on differential effects on males versus females.

Shocks to import penetration significantly increase the male-female mortality gap among young adults. The point estimate in column B3 of the upper panel of Table 2 indicates that a unit trade shock induces an additional 69.6 male relative to female deaths per 100K adults (of each gender) per decade. Given an average differential mortality rate of 1200 per 100K adults per decade over 1990 - 2015, this increment is large. Subsequent columns decompose the overall mortality effect into by-cause categories using the scheme in Case and Deaton (2015, Figure 2). Case and Deaton (2015; 2017) show that drug and alcohol (D&A) related mortality rose by epidemic proportions among working-age adults in this time period. The bottom of column B4 indicates that D&A deaths accounted for 10 percent of all young adult male deaths between 1990 - 2015, while the point estimate in the upper row of the column demonstrates that the male-female gap in D&A deaths surged in trade-impacted CZs. The point estimate of 21.9 ( $t = 3.1$ ) accounts for one-third of the total contribution of trade shocks to differential mortality.

Columns B5 through B8 test for corresponding trade shock-related increases in differential male mortality from liver disease (often alcohol-related), diabetes, lung cancer, and suicide. No effect is significant. The final column (B9) combines all other causes of death beyond those emphasized by Case and Deaton (2015), including infectious diseases, neoplasms and accidents, which account for three of every four young-adult deaths. The point estimate of 41.2 indicates that trade shocks

---

Pierce and Schott (2016b) document statistically significant increases in crime incidents and arrests in such CZs during the 1990s and 2000s. Because incarceration and homelessness are disproportionately prevalent among males (West and Sabol 2008, Table 1 and Appendix Table 7; U.S. Conference of Mayors, 2007, Exhibits 2.3 and 2.4), a rise in either may reduce the number of males enumerated in the non-institutional population.

<sup>23</sup>These vital statistics data, used under agreement with the U.S. Center for Disease Control, cover deaths occurring in 1990 through 2015. The corresponding birth data (used below) extend through the year 2016. The denominator for death rates is the CZ-level population reported by the Census Bureau, which is available for the age bracket 20-39. The dependent variable is normalized to correspond to a 10-year cumulative value. Our regression models include the vector of start-of-period control variables used in previous tables and account for serial correlation in CZ-level mortality rates by additionally controlling for lagged cumulative decadal mortality.

contribute to an overall increase in the gender mortality gap among all remaining causes, with this estimate marginally significant ( $t = 1.8$ ).<sup>24</sup>

In net, the differential increase in male mortality can account for a 16 percent of the fall in the fraction of males among young adults in trade-impacted CZs (column A1 of Table 2).<sup>25</sup> While only a small minority of adults who engage in risky behaviors experience fatal consequences, the remainder may be less attractive marital partners due to their substance abuse. Thus, the differential rise in drug and alcohol abuse among young adult males in trade-exposed locations may imply a fall in the marriage-market value of a broader set of young males.<sup>26</sup>

### 3.3 Fertility, marriage, and children’s living circumstances.

We test finally for impacts of trade shocks on fertility, marriage, and children’s circumstances. Panel A of Table 3 presents the impact of trade exposure on marital status among women ages 18-39, whom we classify as currently married, currently widowed, divorced or separated, or never-married.<sup>27</sup> Trade shocks deter marriage formation: a one-unit trade shock predicts a 0.95 percentage-point decline in the the fraction of young women who are currently married (column A1,  $t = -3.1$ ), a further 0.21 point decline (column A2,  $t = -2.0$ ) in the fraction of women who are previously married, and a corresponding rise of 1.2 points in the fraction of women never married (column A3,  $t = 3.5$ ). Shocks to male and female-intensive employment have opposing and precisely estimated effects on marriage formation (columns A1-II through A3-II): a one unit shock to male-intensive employment reduces the fraction of young adult women ever married by 4.2 points ( $t = 6.6$ , a 12 percent rise on a 1990 base of 34.8 percent) and the fraction currently married by 3.6 points ( $t = -5.8$ ); a unit shock to female-intensive employment has a countervailing impact on marital status that is about two-thirds as large as the impact of a shock to male-intensive employment.

We find corresponding results for fertility, measured as births per 1,000 women ages 20-39.

---

<sup>24</sup>Models using gender-specific trade shocks (panel B-II) find that essentially all of the gender-differential in mortality effects stems from shocks to male-intensive employment. Similarly, models for by-gender mortality, which are reported in Appendix Table A4, find that the mortality response to trade shocks stems almost entirely from male deaths.

<sup>25</sup>A unit trade shock reduces the male fraction of population by 0.25 per 100 adults among those ages 18-39 over the course of a decade (Table 2), implying an effect of 500 per 100K men. A unit trade shock raises excess male versus female mortality by 70 for every 100K adults of each sex among those ages 20-39 over the course of a decade (Table 2). Adjusting for the wider age range of the population versus mortality bracket (22 versus 20 years), this number rises to 77 per 100K adults. Thus, excess mortality can account for a share of  $77/500 = 0.16$  of the decline in the male share of the young adult population in trade-impacted CZs.

<sup>26</sup>See also Charles and Luoh (2010) and Caucutt et al. (2016).

<sup>27</sup>If a woman is currently married, we cannot determine if she was previously widowed, divorced or separated.



Trade shocks significantly deter fertility, with a one-unit shock shock reducing births by 1.9 per 1,000 women (column B4,  $t = -3.6$ ). While it is tempting to interpret this pattern as indicative of the procyclicality of fertility, the lower rows of estimates (panel B-II) show otherwise. Shocks to male-intensive employment diminish fertility ( $\hat{\beta} = -5.5, t = -4.6$ ) while shocks to female-intensive employment raise it ( $\hat{\beta} = 2.1, t = 1.8$ ).

These results support [Becker \(1973\)](#), in which the gains to household formation are increasing in gender-based specialization. Here, shocks that diminish earnings capacity for the high-earning spouse (typically male) reduce these gains, deterring marriage and fertility—and vice versa for shocks that diminish earnings and employment for the low-earnings spouse. This reasoning, and the corroborating evidence in [Table 3](#), helps explain why shocks to manufacturing employment are so damaging to adult social function: by differentially impairing male earnings capacity, such shocks reduce the attractiveness of marriage, fertility, and joint child-rearing.

Despite its strong predictions for marriage and fertility, the [Becker \(1973\)](#) framework is silent on the implications of shifts in relative economic status on children’s living circumstances since this framework does not consider non-marital fertility. As an empirical matter, if a fall in males’ relative economic stature deters fertility by at least as much as it deters marriage, more children will live in two-parent, married, and non-poor households.<sup>28</sup> Conversely, if motherhood is less elastic than marriage to shocks to relative economic stature, then children’s household circumstances will move in the opposite direction. This latter possibility is implicit in the Wilson hypothesis.

---

<sup>28</sup>As the bottom row of [Table 3](#) panel E shows, the fraction of children living in poverty in 1990 was 8.7 percent in married households, 42.3 percent in unmarried cohabiting households, and 47.4 in single-headed non-cohabiting households.

Table 3: Estimated Impact of Manufacturing Trade Shock on Marriage, Fertility, Maternal Status, Childhood Poverty, and Household Structures of Adult Women and Dependent Children, 1990-2014: 2SLS Estimates. Dependent Variables: Changes in Women's Marital Status, Births per 1,000 Women, Fraction of Women with Children, and Fraction of Mothers Unmarried; Fraction of Children Living in Poverty; and Household Type of Women and Children

	<i>A. Women's Marital Status</i>			<i>B. Fertility and Maternity</i>			<i>C. % of Children in HH &lt; Poverty Line</i>	
	Married (1)	Divorced Separated (2)	Never Married (3)	Births per 1,000 Women (4)	% of Women w/ Children (5)	% Mothers Unmarried (6)	(7)	
<i>I. Overall Trade Shock</i>								
$\Delta$ Import Penetration	-0.95 ** (0.30)	-0.21 * (0.11)	1.16 ** (0.33)	-1.94 ** (0.54)	-0.66 ** (0.23)	0.52 ~ (0.31)	0.61 *	
<i>II. Male vs Female Industry Shock</i>								
$\Delta$ Import Penetration $\times$ (Male Share)	-3.57 ** (0.62)	-0.66 ** (0.22)	4.23 ** (0.64)	-5.45 ** (1.19)	-1.79 ** (0.63)	3.28 ** (0.73)	2.13 **	
$\Delta$ Import Penetration $\times$ (Female Share)	2.03 ** (0.55)	0.29 (0.19)	-2.32 ** (0.58)	2.06 ~ (1.16)	0.62 (0.52)	-2.62 ** (0.85)	-1.12	
Mean Outcome Var Level in 1990	-6.92 53.05	-1.62 12.11	8.55 34.84	-2.04 86.87	-3.53 53.24	6.56 23.98	1.65 17.99	
<i>D. Women's Household Type</i>								
	Living w/ Spouse (1)	Living w/ Partner (2)	Other HH Structure (3)	Married Couple (4)	Parent + Unmarried Partner (5)	Single Parent, No Partner (6)	Grand-parent or Other (7)	
	(1)	(2)	(3)	(4)	(5)	(6)	(7)	
<i>I. Overall Trade Shock</i>								
$\Delta$ Import Penetration	-0.81 ** (0.27)	-0.22 ~ (0.12)	1.03 ** (0.30)	-0.35 ~ (0.19)	-0.11 (0.07)	0.30 ** (0.11)	0.15	
<i>II. Male vs Female Industry Shock</i>								
$\Delta$ Import Penetration $\times$ (Male Share)	-3.21 ** (0.55)	0.04 (0.28)	3.17 ** (0.60)	-1.85 ** (0.50)	0.28 (0.23)	1.43 ** (0.32)	0.14	
$\Delta$ Import Penetration $\times$ (Female Share)	1.93 ** (0.54)	-0.52 ** (0.20)	-1.41 ** (0.52)	1.36 * (0.55)	-0.55 * (0.25)	-0.98 * (0.42)	0.17	
Mean Outcome Var Level in 1990	-7.57 50.30	1.65 5.25	5.93 44.45	-4.69 71.39	1.62 2.82	1.79 16.82	1.28 8.96	
Poverty Rate (%) 1990	n/a	n/a	n/a	8.7%	42.3%	47.4%	28.8%	

Notes: N=1444 (722 CZ  $\times$  2 time periods). Outcomes in panels A, B and D consider adult women ages 18-39 while those in panels C and E consider children ages 0-17. Fertility in column B4 is measured through 2016 while all other outcomes are measured through 2014. Dependent variables are: fraction of women with any biological, adopted, or stepchildren in the household (B5); fraction currently married among women with children in the household (B6); the fraction of children in households below the official Census poverty line (C7). Columns D1 and D2 refer to households where either (1) the woman is the spouse or partner of the household head or (2) she is the household head and has a spouse or partner who is living in the household. Column D3 comprises all other household structures. Dependent variables in columns E4-E7 are the fraction of children in each household type: household head is a married parent of the child (E4); household head is a parent with cohabiting partner (E5); household head is a single parent (E6); or household head is a grandparent, other relative, or non-related caregiver (E7). All regressions include the full set of control variables from Table 1, are weighted by the product of period length and CZ population share, and standard errors are clustered on state. ~  $p \leq 0.10$ , \*  $p \leq 0.05$ , \*\*  $p \leq 0.01$ .

Columns B5, B6, and C7 of Table 3 affirm Wilson’s prediction. Column B5 shows that a unit trade shock reduces by 0.66 points the fraction of adult women ages 18-39 with children in the household ( $t = -2.9$ ). Because this effect is only half as large as the increase in the fraction of women ages 18-39 who are never-married (column A3), the shock raises the share of mothers who are unmarried (column B6,  $\hat{\beta} = 0.52, t = 1.70$ ), while the share of children living in poverty also increases (column C7,  $\hat{\beta} = 0.61, t = 2.3$ ). Disaggregating the trade shock into its gender-specific components (columns B5-II, B6-II, and C7-II), trade shocks to male employment *reduce* the fraction of women with children (by 1.8 points) while *raising* the share of mothers who are unmarried by 3.3 points ( $t = 4.5$ ) and the share of children living in poverty by 2.1 points ( $t = 3.0$ ); shocks to female employment raise the prevalence of motherhood, reduce the fraction of mothers who are unmarried, and reduce the fraction of children living in poverty.

Panels D and E complete the picture of household adjustment by considering women’s and children’s living circumstances. Consistent with the panel A findings for marriage, a unit trade shock reduces the fraction of women living with a married partner by 0.81 percentage points and the fraction cohabiting with an unmarried partner by additional 0.22 points. The declining marriage rate is thus not compensated by a rising propensity of young unmarried women to live with a partner.

Panel E documents how these countervailing effects on fertility, marriage, and single motherhood net out for children’s circumstances. In column E4, the fraction of children living in married two-parent households falls by 0.35 points per unit trade shock ( $t = -1.7$ ), while the fraction living in single-parent, non-cohabiting households rises by 0.30 points (column E6,  $t = 2.8$ ). Echoing our findings for marriage and fertility, in panel E-II these adverse effects on children run entirely through shocks to male employment, which raise the share of children living in single-headed, non-cohabiting couples. Adverse shocks to female employment have *protective* effects for children, significantly raising the share of children in married households, reducing the share in non-married cohabiting and single-headed households, and weakly reducing the fraction of children living in poverty.

## 4 Conclusions

Our analysis confirms William Julius Wilson’s hypothesis that contracting blue-collar employment catalyzes changes in marriage, fertility, household structures, and children’s living circumstances.

Contractions in the supply of economically secure young adult men stemming from rising trade pressure spur a surge in male idleness and premature mortality, a decline in marriage and fertility, an increase in the fraction of mothers who are unmarried and who are heads of single, non-cohabiting households, and a growth in the fraction of children raised in poverty. Whereas Wilson was writing about the African-American urban poor, our analysis encompasses all U.S. young adults. Appendix Table A5 shows that our findings for employment, earnings, women’s marital status, and childhood poverty are also confirmed when we focus on non-Hispanic whites.<sup>29</sup>

The implied magnitudes of our estimated impacts are quantitatively important. Scaling the observed rise in China import penetration between 1990 and 2014 by the estimates above, we would infer that rising trade pressure reduced the employment to population rate of young adult males by 3.9 percentage points as compared to an observed decline of 7.2 percentage points; reduced the prevalence of marriage among young adult women by 2.4 percentage points as compared to an observed decline of 16.7 percentage points; and increased the fraction of children living in poor households by 1.6 percentage points as compared to an observed increase of 4.0 percentage points.

A key question unanswered by our work is whether reversing these adverse currents in blue-collar employment would undo their effects on marriage, fertility, and childhood poverty, or whether—as in [Kearney and Wilson \(2017\)](#)—some of these consequences would persist even where opportunities for blue-collar men improve.

## References

- Acemoglu, Daron, David Autor, David Dorn, Gordon H. Hanson, and Brendan Price**, “Import Competition and the Great US Employment Sag of the 2000s,” *Journal of Labor Economics*, jan 2016, 34 (S1), S141–S198.
- Aguiar, Mark, Mark Bilts, Kerwin Kofi Charles, and Erik Hurst**, “Leisure Luxuries and the Labor Supply of Young Men,” 2017, *NBER Working Paper No. 23552*.
- Ananat, Elizabeth O., Anna Gassman-Pines, and Christina Gibson-Davis**, “Community-wide Job Loss and Teenage Fertility: Evidence from North Carolina,” *Demography*, 2013, 50 (6), 2151–71.
- Angrist, Joshua D.**, “How Do Sex Ratios Affect Marriage and Labor Markets? Evidence from America’s Second Generation,” *Quarterly Journal of Economics*, 2002, 117 (3), 997–1038.

---

<sup>29</sup>Our Census and ACS-based samples lack sufficient statistical power to analyze race *differences* in the consequences of trade shocks at the CZ level.

- Autor, David H. and David Dorn**, “The Growth of Low Skill Service Jobs and the Polarization of the U.S. Labor Market,” *American Economic Review*, 2013, *103* (5), 1553–1597.
- , – , and **Gordon H. Hanson**, “The China Syndrome : Local Labor Market Effects of Import Competition in the United States,” *American Economic Review*, 2013, *103* (6), 2121–2168.
- , – , and – , “The Geography of Trade and Technology Shocks in the United States,” *American Economic Review*, 2013, *103* (3), 220–225.
- , – , and – , “The Labor Market and the Marriage Market: How Adverse Trade Shocks Affect Marriage, Fertility and Childrens Living Circumstances,” 2014, *Working Paper* (July).
- , – , – , and **Jae Song**, “Trade Adjustment: Worker-Level Evidence,” *Quarterly Journal of Economics*, 2014, *129* (4), 1799–1860.
- Bailey, Martha J. and Thomas A. DiPrete**, “Five Decades of Remarkable but Slowing Change in U . S . Women’ s Economic and Social Status and Political Participation,” *Russell Sage Foundation Journal of the Social Sciences*, 2016, *2* (4), 1–32.
- Becker, Gary S.**, “A Theory of Marriage: Part I,” *Journal of Political Economy*, 1973, *81* (4), 813–846.
- Black, Dan A., Terra G. McKinnish, and Seth G. Sanders**, “Does the availability of high-wage jobs for low-skilled men affect welfare expenditures? Evidence from shocks to the steel and coal industries,” *Journal of Political Economy*, 2003, *87* (9), 1921–1942.
- Case, Anne and Angus Deaton**, “Rising Morbidity and Mortality in Midlife among White Non-Hispanic Americans in the 21st Century,” *Proceedings of the National Academy of Sciences*, 2015, *112* (49), 15078–15083.
- and – , “Mortality and Morbidity in the 21st Century,” *Brookings Papers*, 2017, pp. 397–467.
- Caucutt, Elizabeth M., Nezh Guner, and Christopher Rauh**, “Is Marriage for White People? Incarceration and the Racial Marriage Divide,” 2016, *Working Paper*.
- Charles, Kerwin K. and Ching-Ming Luoh**, “Male Incarceration, the Marriage Market, and Female Outcomes,” *Review of Economics and Statistics*, 2010, *92* (3), 614–627.
- Chetverikov, Denis, Bradley Larsen, and Christopher Palmer**, “IV Quantile Regression for Group-Level Treatments, With an Application to the Distributional Effects of Trade,” *Econometrica*, 2016, *84* (2), 809–833.
- Deiana, Claudio**, “The Bitter Side of Trade Shocks: Local Labour Market Conditions and Crime in the US,” 2015, *Working Paper*.
- Dorn, David**, “Essays on Inequality, Spatial Interaction, and the Demand for Skills,” 2009, *Dissertation University of St. Gallen No. 3613*.
- Feler, Leo and Mine Z. Senses**, “Trade Shocks and the Provision of Local Public Goods,” *IZA Discussion Paper*, 2015, *10231*.
- Goos, Maarten, Alan Manning, and Anna Salomons**, “Explaining Job Polarization: Routine-Biased Technological Change and Offshoring,” *American Economic Review*, 2014, *104* (8), 2509–2526.

- Greenwood, Jeremy, Nezh Guner, and Guillaume Vandenbroucke**, “Family Economics Writ Large,” *Journal of Economic Literature*, 2017, 55 (4), 1346–1434.
- Jahoda, Marie, Paul F. Lazarsfeld, and Hans Zeisel**, *Marienthal: The Sociology of an Unemployed Community*, Chicago: Aldine, Atherton, 1971.
- Kearney, Melissa S. and Riley Wilson**, “Male Earnings, Marriageable Men, and Nonmarital Fertility: Evidence from the Fracking Boom,” 2017, *NBER Working Paper No. 23408*.
- Lindo, Jason M., Jessamyn Schaller, and Benjamin Hansen**, “Caution! Men Not at Work: Gender-Specific Labor Market Conditions and Child Maltreatment,” 2013, *NBER Working Paper No. 18994*.
- Murray, Charles**, *Coming Apart: The State of White America, 1960-2010*, New York: Crown Forum, 2012.
- Page, Marianne, Ann Huff Stevens, and Jason Lindo**, “Parental income shocks and outcomes of disadvantaged youth in the United States,” in “The problems of disadvantaged youth: An economic perspective,” University of Chicago Press, 2007, pp. 213–235.
- Pierce, Justin R. and Peter K. Schott**, “The Surprisingly Swift Decline of US Manufacturing Employment,” *American Economic Review*, 2016, 106 (7), 1632–1662.
- and —, “Trade Liberalization and Mortality: Evidence from U.S. Counties,” *NBER Working Paper No. 22849*, November 2016.
- Ruggles, Steven, Matthew Sobek, Catherine A. Fitch, Ronald Goeken, Patricia K. Hall, Miriam King, and Chad Ronnander**, “Integrated Public Use Microdata Series: Version 3.0,” Technical Report, Minneapolis Population Center, Minneapolis, MN 2004.
- Schaller, Jessamyn**, “Booms, Busts, and Fertility: Testing the Becker Model Using Gender-Specific Labor Demand,” *Journal of Human Resources*, 2016, 51 (1), 1–29.
- Shenhav, Naama**, “Bribed to Wed? Family Formation and Labor Market Responses to the Gender Wage Gap,” 2016, *Working Paper*.
- Tolbert, Charles M. and Molly Sizer**, “US Commuting Zones and Labor Market Areas: A 1990 Update,” *U.S. Department of Agriculture, 1996, Economic Research Service Staff Paper*.
- U.S. Conference of Mayors**, *A Status Report on Hunger and Homelessness in America’s Cities: A 23-City Survey* 2007.
- Vance, J.D.**, *Hillbilly Elegy: A Memoir of a Family and Culture in Crisis*, Harper, 2016.
- West, Heather C. and Willaim J. Sabol**, “Prisoners in 2007,” *Bureau of Justice Statistics Bulletin*, 2008, pp. 1–26.
- Wilson, William J.**, *The Truly Disadvantaged: The Inner City, the Underclass, and Public Policy*, Chicago: Univ of Chicago Press, 1987.
- , *When Work Disappears: The World of the New Urban Poor*, Alfred A. Knopf, 1996.
- and **Kathryn Neckerman**, “Poverty and Family Structure: The Widening Gap between Evidence and Public Policy Issues,” in Sheldon Danziger and Daniel Weinberg, eds., *Fighting Poverty: What Works and What Doesn’t*, Cambridge, MA: Harvard University Press, 1986.

## 5 Appendix Tables

Table A1: Mean and Percentiles of Decadal Growth in Import Penetration, Overall and Gender-Specific Measures

	$\Delta$ Import Penetration		
	1990-2014	1990-2000	2000-2014
	(1)	(2)	(3)
<i>I. Overall Shock</i>			
Mean	1.07 (0.71)	0.95 (0.61)	1.15 (0.77)
P25	0.64	0.54	0.73
P50	0.92	0.89	1.01
P75	1.30	1.22	1.30
P75-P25	0.66	0.68	0.57
<i>II. Male Industry Shock</i>			
Mean	0.63 (0.40)	0.56 (0.33)	0.69 (0.43)
P25	0.38	0.35	0.40
P50	0.58	0.53	0.62
P75	0.80	0.73	0.80
P75-P25	0.42	0.38	0.41
<i>III. Female Industry Shock</i>			
Mean	0.43 (0.35)	0.39 (0.31)	0.46 (0.38)
P25	0.23	0.21	0.25
P50	0.35	0.34	0.37
P75	0.50	0.48	0.52
P75-P25	0.27	0.27	0.27

Notes: N=1444 (722 commuting zones x 2 time periods) in column 1, N=722 in columns 2 and 3. Observations are weighted by start of period commuting zone share of national population.

Table A2: Estimated Impact of Manufacturing Trade Shock on Employment, 1970-2014: OLS and 2SLS Estimates. Dependent Variable: Change in Percentage of Population Age 18-39 Employed in Manufacturing

<i>I. OLS and 2SLS, 1990-2014</i>								
	1990-2000				1990-2014			
	OLS		2SLS		OLS		2SLS	
	(1)		(2)		(3)		(4)	
$\Delta$ Import Penetration	-0.65	*	-2.12	**	-1.29	**	-1.58	**
	(0.26)		(0.43)		(0.13)		(0.16)	
2SLS First Stage Estimate			0.73	**			0.81	**
			(0.09)				(0.04)	
<i>II. 2SLS Stacked, 1990-2014</i>								
	(5)		(6)		(7)		(8)	
$\Delta$ Import Penetration	-1.64	**	-1.05	**	-0.91	**	-1.06	**
	(0.14)		(0.15)		(0.15)		(0.17)	
Census Division Dummies	Yes		Yes		Yes		Yes	
Manufacturing Emp Share <sub>-1</sub>			Yes		Yes		Yes	
Occupational Composition <sub>-1</sub>					Yes		Yes	
Population Composition <sub>-1</sub>							Yes	
2SLS First Stage Estimate	0.83	**	0.68	**	0.65	**	0.64	**
	(0.04)		(0.06)		(0.05)		(0.06)	
<i>III. Reduced Form OLS, 1970-2014</i>								
	Pre-Periods				Exposure Periods			
	1970-1980		1980-1990		1990-2000		2000-2014	
	(9)		(10)		(11)		(12)	
$\Delta$ Predicted Import Penetration 1990-2014	1.69	**	0.21		-1.09	**	-0.70	**
	(0.36)		(0.33)		(0.30)		(0.10)	

Notes: N=722 in panels I and III, N=1444 (722 commuting zones x 2 time periods) in panel II. All models in panel II comprise a dummy for the 2000-2014 period. Occupational composition controls in columns 7-8 comprise the start-of-period indices of employment in routine occupations and of employment in offshorable occupations as defined in Autor and Dom (2013). Population controls in column 8 comprise the start-of-period shares of commuting zone population that are Hispanic, black, Asian, other race, foreign born, and college educated, as well as the fraction of women who are employed. The models in panel III regress the outcome on the instrument for decadal growth in Import Penetration during the 1990-2014 period and initial Census manufacturing employment shares. All regressions are weighted by the product of period length and CZ population share, and standard errors are clustered on state.  $\sim$   $p \leq 0.10$ , \*  $p \leq 0.05$ , \*\*  $p \leq 0.01$ .



Table A3: Estimated Impact of Manufacturing Trade Shock on Employment, Earnings and Idleness by Gender, 1990-2014: 2SLS Estimates. Dependent Variables: Change in Percentage of Population Age 18-39 that is Employed, Unemployed or Non-Employed, Change in Annual Earnings of Population Age 18-39 by Percentile of the Earnings Distribution (in 2015\$); Change in Percentage of Young Adults Age 18-25 that is Employed, Not Employed but in School, or Neither Employed nor in School

	<i>A. Emp Status Age 18-39</i>			<i>B. Annual Earnings Age 18-39</i>			<i>C. Idleness Age 18-25</i>		
	Emp (1)	Unemp (2)	NILF (3)	P25 (4)	P50 (5)	P75 (6)	Emp (7)	in School (8)	Neither (9)
<i>I. Males</i>									
<i>Overall Trade Shock</i>									
Δ Import Penetration	-1.54 ** (0.29)	0.55 ** (0.15)	0.98 ** (0.20)	-830 ** (222)	-1,279 ** (286)	-2,041 ** (443)	-1.50 ** (0.38)	0.72 ** (0.26)	0.79 ** (0.29)
<i>Male Industry vs Female Industry Shock</i>									
Δ Import Penetration × (Male Ind Share)	-3.06 ** (0.79)	1.09 ** (0.38)	1.97 ** (0.57)	-2,304 ** (634)	-3,737 ** (1041)	-6,254 ** (1295)	-3.11 ** (1.06)	1.97 ** (0.69)	1.14 (0.71)
Δ Import Penetration × (Female Emp)	0.19 (0.61)	-0.06 (0.25)	-0.13 (0.53)	848 (609)	1,518 ~ (887)	2,753 * (1099)	0.32 (0.81)	-0.71 (0.55)	0.38 (0.55)
Mean Outcome Var Level in 1990	-3.00 82.33	0.65 6.42	2.35 11.25	-2,134 8,011	-2,533 26,000	-1,308 45,771	-3.89 70.53	2.47 17.95	1.42 11.52
<i>II. Females</i>									
<i>Overall Trade Shock</i>									
Δ Import Penetration	-0.88 * (0.35)	0.36 ** (0.11)	0.53 ~ (0.31)	-158 ~ (84)	-834 ** (291)	-1,194 ** (252)	-0.87 ~ (0.45)	0.74 ** (0.28)	0.13 (0.31)
<i>Male Industry vs Female Industry Shock</i>									
Δ Import Penetration × (Male Ind Share)	0.08 (0.84)	0.71 * (0.29)	-0.78 (0.71)	-88 (232)	-792 (697)	-2,569 ** (527)	0.05 (1.06)	1.41 ~ (0.82)	-1.46 * (0.64)
Δ Import Penetration × (Female Emp)	-1.97 ** (0.74)	-0.04 (0.23)	2.01 ** (0.70)	-238 (220)	-881 ~ (504)	369 (513)	-1.91 * (0.93)	-0.03 (0.80)	1.94 ** (0.65)
Mean Outcome Var Level in 1990	-0.26 67.69	0.62 5.20	-0.36 27.12	-241 1,086	-407 12,624	1,183 28,282	-1.06 62.83	2.72 17.09	-1.67 20.09

Notes: N=1444 (722 CZ x 2 time periods). All regressions include the full set of control variables from Table 1, are weighted by the product of period length and CZ population share, and standard errors are clustered on state. ~ p ≤ 0.10, \* p ≤ 0.05, \*\* p ≤ 0.01.

Table A4: Estimated Impact of Manufacturing Trade Shock on Cumulative Mortality by Gender 1990-2015: 2SLS Estimates. Dependent Var: Male or Female Cumulative Mortality per 100k Population Age 20-39 by Cause of Death

	Total	D&A Poison	Liver Disease	Diabetes	Lung Cancer	Suicide	All Other
	(1)	(2)	(3)	(4)	(5)	(6)	(7)
<i>I. Male Mortality</i>							
<i>Overall Trade Shock</i>							
$\Delta$ Import Penetration	94.6 *	28.4 **	-0.8	-1.2	0.6	-3.9	50.6
	(41.1)	(10.6)	(1.5)	(0.8)	(0.5)	(5.3)	(34.3)
<i>Male Industry vs Female Industry Shock</i>							
$\Delta$ Import Penetration $\times$ (Male Ind Share)	213.8 *	95.8 **	-4.6	-0.8	0.6	-29.3 *	86.5
	(104.4)	(28.2)	(5.1)	(2.8)	(1.2)	(14.7)	(96.9)
$\Delta$ Import Penetration $\times$ (Female Emp Share)	-37.0	-48.4	3.4	-1.7	0.6	24.7 *	10.9
	(111.8)	(29.8)	(4.0)	(2.8)	(1.7)	(12.1)	(101.8)
<i>II. Female Mortality</i>							
<i>Overall Trade Shock</i>							
$\Delta$ Import Penetration	25.0	6.4	-0.6	0.3	-0.2	1.6	9.3
	(17.0)	(4.7)	(1.4)	(0.6)	(0.4)	(1.4)	(14.2)
<i>Male Industry vs Female Industry Shock</i>							
$\Delta$ Import Penetration $\times$ (Male Ind Share)	30.3	22.9 *	-2.0	-2.7	1.7	-8.2	-7.9
	(50.3)	(10.7)	(3.3)	(1.9)	(1.4)	(5.1)	(42.8)
$\Delta$ Import Penetration $\times$ (Female Emp Share)	19.1	-12.4	1.0	3.6	-2.3	12.7 *	28.3
	(61.1)	(14.2)	(4.0)	(2.7)	(1.7)	(5.6)	(51.8)

Notes: N=1444 (722 CZ x 2 time periods). All regressions include the full set of control variables from Panel B of Table 2. All models are weighted by the product of period length and CZ population share, and standard errors are clustered on state.  $\sim$   $p \leq 0.10$ , \*  $p \leq 0.05$ , \*\*  $p \leq 0.01$ .

Table A5: Comparing Estimated Impacts of Manufacturing Trade Shocks on Non-Hispanic White Versus Full Population (2SLS Estimates): Employment and Earnings among Adults Age 18-39, Marital Status of Women and Mothers Age 18-39, and Poverty Status and Household Structure among Children Age 0-17. Dependent Var: Change in Gender Differential in Employment Rate and Median Earnings, Change in Percentage of Married Women and Unmarried Mothers, Change in Percentage of Children in Poor and Single-Headed Households

	<i>Gender Gap in</i>		<i>Marital Status</i>		<i>Children in HH</i>	
	Employ- ment (1)	Median Earnings (2)	% Women Married (3)	% Mothers Unmarried (4)	<Poverty Line (5)	Single- Headed (6)
<i>I. Outcomes for Non-Hispanic Whites</i>						
<i>Overall Trade Shock</i>						
$\Delta$ Import Penetration	-0.48 (0.27)	~ -781 (366)	* -1.24 (0.36)	** 0.52 (0.26)	* 0.59 (0.21)	** 0.40 (0.11)
<i>Male Industry vs Female Industry Shock</i>						
$\Delta$ Import Penetration $\times$ (Male Ind Share)	-3.09 (0.86)	** -3,975 (824)	** -4.13 (0.70)	** 3.26 (0.64)	* 1.35 (0.60)	** 1.17 (0.28)
$\Delta$ Import Penetration $\times$ (Female Emp)	2.50 (0.68)	** 2,855 (830)	** 2.06 (0.54)	** -2.61 (0.85)	-0.29 (0.57)	~ -0.49 (0.30)
Mean Outcome Var Level in 1990	-3.06 14.60	-2,446 15,734	-7.11 56.73	5.44 16.95	1.65 17.99	1.28 11.92
<i>II. Outcomes for Full Population</i>						
<i>Overall Trade Shock</i>						
$\Delta$ Import Penetration	-0.65 (0.26)	* -445 (191)	* -0.95 (0.30)	** 0.52 (0.31)	~ 0.61 (0.26)	* 0.30 (0.11)
<i>Male Industry vs Female Industry Shock</i>						
$\Delta$ Import Penetration $\times$ (Male Ind Share)	-3.13 (0.78)	** -2,945 (593)	** -3.57 (0.62)	** 3.28 (0.73)	** 2.13 (0.70)	** 1.43 (0.32)
$\Delta$ Import Penetration $\times$ (Female Emp)	2.17 (0.65)	** 2,400 (630)	** 2.03 (0.55)	** -2.62 (0.85)	-1.12 (0.82)	* -0.98 (0.42)
Mean Outcome Var Level in 1990	-2.74 14.64	-2,126 13,376	-6.92 53.05	6.56 23.98	1.65 17.99	1.79 16.82

Notes: N=1444 (722 CZ  $\times$  2 time periods). Panel II reproduces results from Tables 1 and 3. All regressions include the full set of control variables from Table 1. All models are weighted by the product of period length and CZ population share, and standard errors are clustered on state. ~  $p \leq 0.10$ , \*  $p \leq 0.05$ , \*\*  $p \leq 0.01$ .